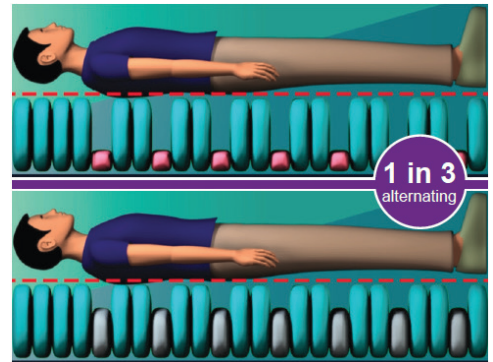


Tamora III Advance

Dynamic Mattress Replacement



 [Click to play video](#)



TruComfort™

The deflated cell fully re-inflates before the next cell deflates, eliminating the movement some patients experience with the traditional alternating cells.

The Tamora III Advance is a **1 in 3** alternating, **24 cell** mattress replacement system providing highly effective care and protection for patients considered to be up to a **very high risk** of pressure ulcer development and is a cost effective solution for various healthcare environments.

A flexible range of features allow the Tamora III Advance to provide individualised patient care. The system offers both **Dynamic, Static** and **Constant Low Pressure** therapy modes allowing nursing staff to adjust the therapy and comfort offered to patients.

Features & Benefits

Individualised pressure care management

Automatic functions and flexible therapy settings ensure that the system provides optimum levels of pressure area care alongside the flexibility to manage individual patient requirements.

The system offers both **Alternating** and **Constant Low Pressure** therapy modes, while the **Auto-Detection** feature will automatically check for changes in patient weight/position and adjust internal cell pressures ensuring that patients receive optimised care and nursing staff are not burdened with difficult set-up

Enhanced patient safety and peace of mind

Constructed of a single layer of 24 alternating cells on top of a bottom layer of cells with a welded divide.

The modern power unit is also equipped with advanced audible and visual alarms.

An **Auto-Lockout** feature prevents unintentional activation of the control panel ensuring that any setting changes are deliberate whilst the **Timed Static mode** automatically returns to **Alternating mode** to safeguard patients against the risk of pressure damage.

Optimised patient comfort and pressure care

Patient comfort is optimised with the **Comfort Control** which allows nursing staff to adjust pressures to suit individual patient requirements and in addition to a 10 minute cycle time, the system offers **variable cycle times** with the choice of extended cycle periods of 10/15/20/25/30 minutes, which may be desirable as a patient begins to rehabilitate and the risk reduces.

The mattress also features a dedicated **head zone** section which allows for stable and comfortable head support.



Power Unit

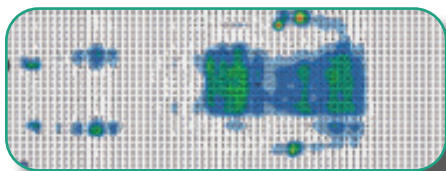
- Alternating 3-cell cycle
- Digital control panel
- Comfort control
- Auto-Detection pressure setting:
Detecting the patients weight distribution to set internal pressures appropriately.
- 9 litres per minute air flow
- Variable cycle times (10/15/20/25/30 mins)
- Automatic control panel lockout
- Timed static mode:
Automatically returning to Alternating mode, safeguarding patients against the risk of pressure damage.
- Timed Auto-Firm
- Constant low pressure
- Transport mode - Up to 12 - 24 hours
- Audible and visual alarms
- Annual service indicator
- Adjustable hanging brackets

Specification

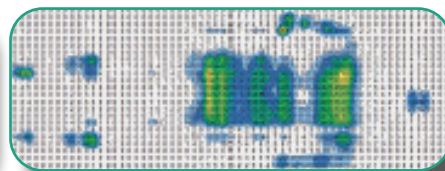
Product code:	UPRA367803A-3	Cycle time:	10 / 15 / 20 / 25 / 30 mins (3-cell cycle)
Risk category:	Up to very high risk	Pressure range:	15-50mmHG
Max user weight:	255kg 40 stone	Supply voltage:	230V, 50 Hz
Mattress dimensions:	2000 x 900 x 200mm	Fuse rating:	T1A
Power unit dimensions:	320 x 130 x 230mm	Current rating:	0.12 A
Product weight:	10.5kg mattress 3.5kg pump	Classification:	Class II, Type BF
Cell material:	TPU	Compliance:	EN 60601-1, EN 60601-1-2
Mattress material:	Polyester 100% PU (Top & Sides)	Warranty:	2 years
Mattress base:	NYLON 200D/118T+PVC		

Cleaning: Can withstand up to 10,000 ppm chlorine (to be used in conjunction with local infection control guidelines)
(can be laundered up to 84°C)

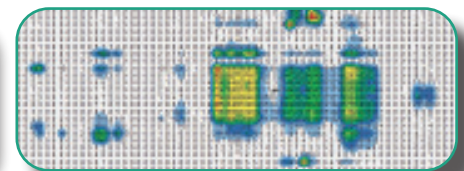
Pressure Mapped Patient Age: 44 | Gender: Male | Weight: 82kg on 75kg setting | Height: 170cm



Cycle 1



Cycle 2



Cycle 3

Mattress

- Cell-on-cell construction
- Static head cells:
Providing support and stability
- Premium quality TPU coated nylon cells
- Low air loss - Climate control:
Reducing skin heat and moisture by utilising the alternating air during each cycle to ventilate the mattress.
- CPR Valve:
Providing rapid deflation for emergency situations ensuring CPR can commence as quickly as possible.
- Strong cell retention knitted bands
- Maximum patient weight 255kg / 40 stone

Cover

- Soft, waterproof vapour permeable PU cover:
Improves patient comfort and maintains skin integrity by reducing shear and friction forces.
- 360 degree zipper
- Welded seams and enclosed zip
- Integral covered air pipe
- Cable management system



For more information on this product please contact us on
tel: 0333 321 8996 or email: sales@ultimatehealthcare.co.uk

www.ultimatehealthcare.co.uk